

A man with dark hair and a beard is sitting at a desk, looking down at a keyboard. He is wearing a dark, horizontally striped long-sleeved shirt. In front of him are two large HP Z27 G5 monitors. Between the monitors is a small, square HP Z mini G5 PC. The background is a large bookshelf filled with many colorful binders and books. The scene is dimly lit, with the primary light source coming from the monitors and the ambient light of the room.

2020 Z2 G5 PORTFOLIO

THE Z BY HP

ENTRY PORTFOLIO

POWERFUL

EXPANDABLE

HIGHLY SECURE

COST-OPTIMIZED



HP Z1 Entry Tower G6
HP's most affordable
desktop workstation⁴

HP Z2 Tower G5
The World's most expandable
entry workstation³



HP Z2 Mini G5
World's most powerful
mini workstation¹



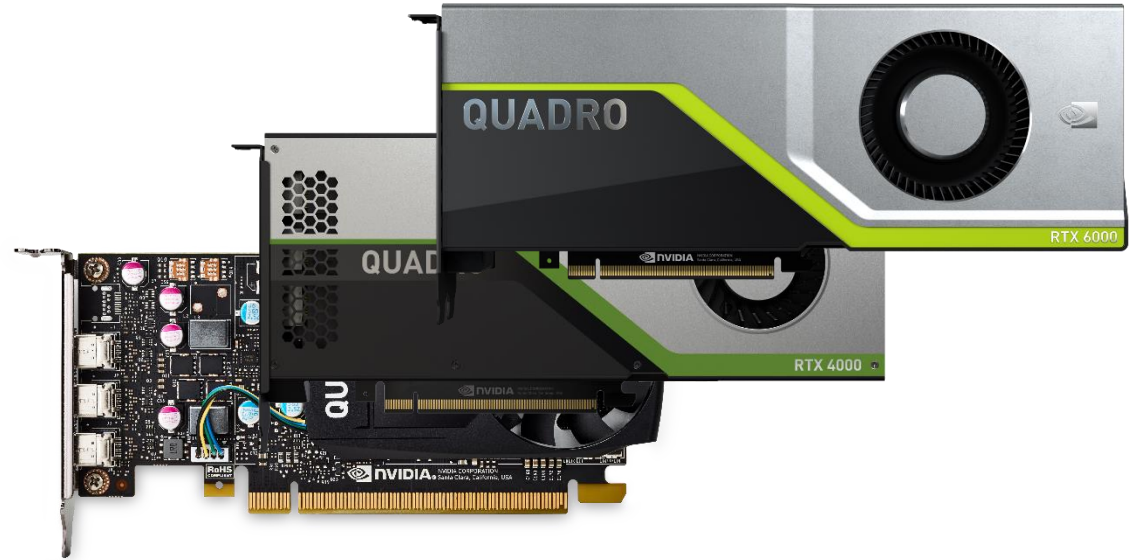
HP Z2 Small Form Factor G5
The world's most
powerful SFF workstation²



QUADRO® PROFESSIONAL PERFORMANCE

NVIDIA® Quadro®

(up to RTX 6000 24GB on Z2 Tower G5;
up to RTX 3000 6GB MXM on Z2 SFF & Mini G5*)





HAVE CONFIDENCE IN RELIABILITY & SECURITY

STARTING WITH
DURABLE CONSTRUCTION*

360K

HOURS INCLUDED IN THE
HP TOTAL TEST PROCESS⁶

UNDERGOES MIL-STD TESTS⁵

CHECKING COMPONENTS THROUGH FUNCTIONAL &
SYSTEM INTEGRATION TESTING



SECURE COMPUTE POWER

Z2 Workstations

Co-locate data and compute for security and faster load times



HIGHLY
SECURE



PREDICTABLE
HIGH
PERFORMANCE



PROFESSIONAL
GRAPHICS AND
ISV APPS



REMOTE ACCESS

ZCentral Remote Boost²⁵

Access workstation power as if you were local



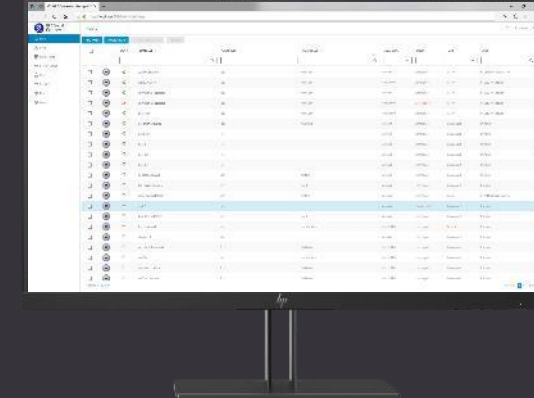
TURN YOUR
END DEVICE
INTO A
WORKSTATION



COLLABORATION



MULTI
SCREEN



FLEXIBLE IT

ZCentral Connect²⁶

Easily manage remote connections and compute power



REMOTE



ONE SIMPLE
INTERFACE



SHARE
RESOURCES

Z2 G5 ECOSYSTEM

A wide range of AMO selections

Modern Look

HP Z Displays
(Recommendations:
Z24n G3 and Z27q G3)



Graphic Performance

NVIDIA® Quadro® RTX 6000 24GB
NVIDIA® Quadro® P620 2GB
AMD® Radeon® Pro W5700 8GB*



VR

HP Reverb G2 Virtual Reality Headset



Flexible I/O Cards

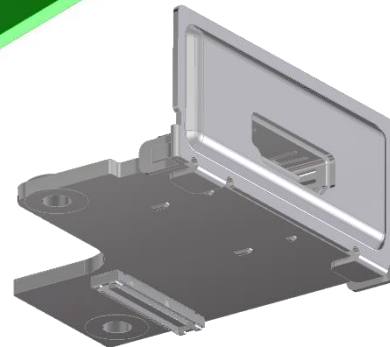
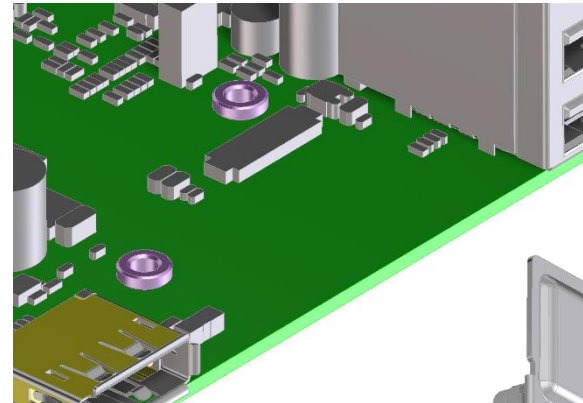
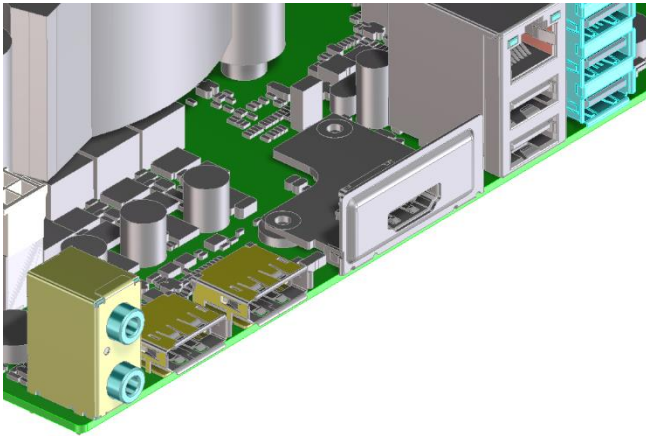
HDMI, VGA, DP, Serial port,
Dual USB-A, Thunderbolt 3,
USB Type-C® w/ Alt Mode, LAN



Configure to your needs, change as you grow

FLEXIBLE I/O

- Optional
- After-market options
- Easily swappable



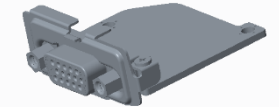
DisplayPort™



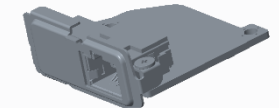
HDMI



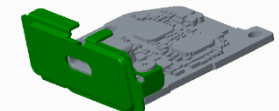
VGA



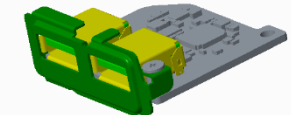
2.5GbE LAN*



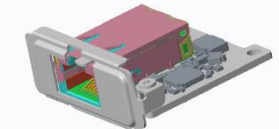
USB Type-C®



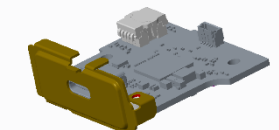
Dual USB-A



1GbE LAN



Thunderbolt™*



*Available on selected model and configs only

Thunderbolt™ for SFF requires PCIe Add in Card

HP Confidential. For use by HP or Partner with Customers under HP CDA only.

© 2020 HP Development Company, L.P. The information contained herein is subject to change without notice.

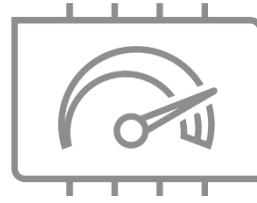
HP Z2 MINI G5

The world's most powerful
mini workstation¹ is the **NEW**
HUB OF THE HOME



Z2 MINI G5

WHAT'S NEW?



Uncompromising performance

- Intel® 125W 10-core Core™ and Xeon® W series processors*
- NVIDIA® Quadro® 2000 and 3000-class graphics
- Dual M.2 storage slots
- Flexible I/O for today and tomorrow
- Intel® Wi-Fi 6
- 280W power adapter



The perfect fit, anywhere

- More power in an amazingly small footprint
- Centralized management with HP ZCentral Remote Boost software²⁵



We test it so you can trust it 24/7

- Deploy in mission critical environments
- Assured compatibility with ISV certifications
- Access to high performance visualization processing
- Enhanced security features
- Planned to have EPEAT® Gold certification²⁸
- More sustainability features
- MIL-STD tested



THERMALS

BETTER THAN BEFORE



Internal components may differ from image shown based on your configuration.

Usage of **copper** on the performance base unit (vs. aluminum on G4 Mini)

New thermal design delivers **increased performance** while maintaining the same product dimensions:

1.38x CPU performance improvement*

Higher GPU power, **up to 60W**



HP Z2 MINI G5

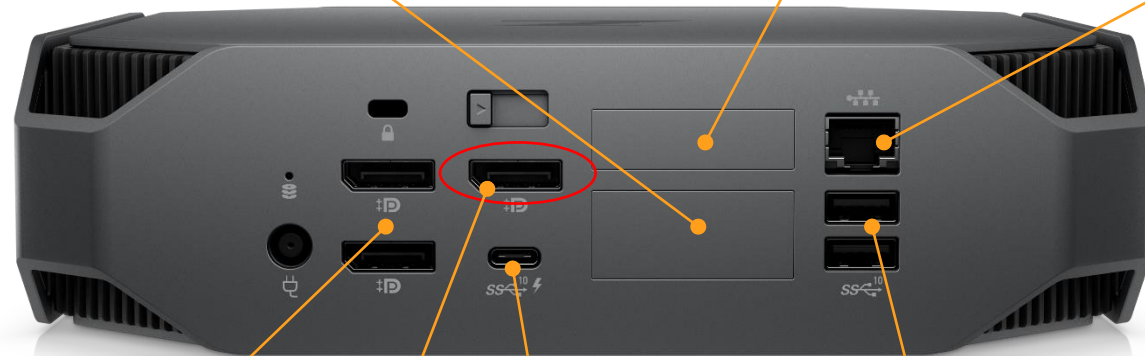
PORTS HIGHLIGHTS

Flex Option Slot (Lower) choice of the following:

- DP 1.4
- HDMI 2.0b
- VGA
- 2nd 1Gb Ethernet RJ45
- Dual Type-A SuperSpeed 5Gbps signaling rate port
- Type-C® USB SuperSpeed 10Gbps signaling rate port (ALT DP, PD 15W)
- Thunderbolt™ 3 (40Gbps, perf only)
- 2.5GbE LAN (perf only)

Flex Option Slot (Upper) choice of the following:

- Dual Type-A SuperSpeed USB 5Gbps signaling rate port
- Serial Port
- Fiber NIC (available Q1, 2021)



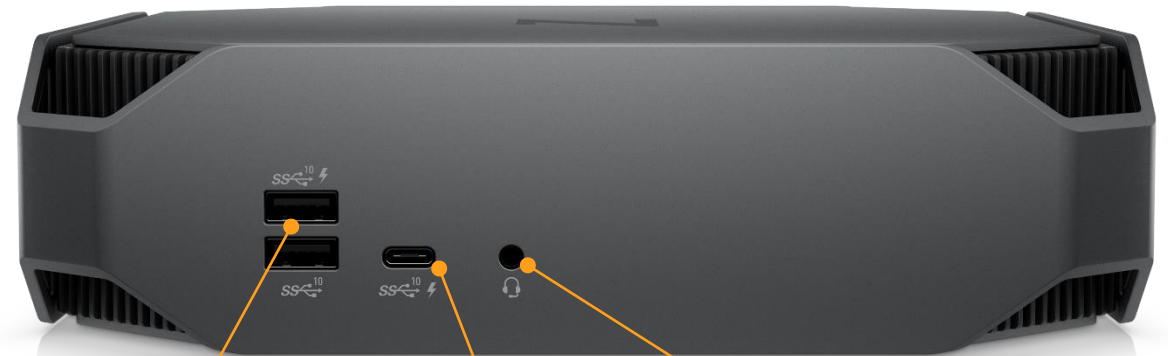
3x DisplayPort™ 1.4*

(only available with discrete graphics)

Type-C® SuperSpeed USB 10Gbps signaling rate port (optional, supports charging)

2x Type-A SuperSpeed USB 10Gbps signaling rate port

RJ-45 (network)



2x Type-A SuperSpeed USB 10Gbps signaling rate port (1 supports charging)

Universal Audio Jack

Type-C® SuperSpeed USB 10Gbps signaling rate port (supports charging)

YEAR OVER YEAR COMPARISON

HP Z2 Mini G4

SUSTAINABLE
EPEAT® SILVER²⁸

HP Z2 Mini G5

MORE SUSTAINABLE
EPEAT® GOLD (*goal*)²⁸

MORE GRAPHIC OPTIONS
NVIDIA® QUADRO®



BIG POWER FOR SMALL SPACES

Z2 Mini accessories



Get desktop workstation power anywhere

Remarkably small and widely versatile desktop that fits any home office or studio, is easily portable around your home or office space and mountable behind your display.

IT can equip their employees to work 100% remotely with ZCentral and access racked Z2 (7 Minis fit in 5U).

THE AVERAGE
EMPLOYEE HAS LOST
33%
IN SQUARE FOOTAGE
OVER 7 YEARS³¹





HP Z2 MINI VESA MOUNT FOR HP Z DISPLAYS³²



Mount the Z2 Mini behind Z displays for zero footprint on the desk

B300 Mounting Bracket
Part #: 2DW53AA



H Z Displays supported:
Z22n G2, Z23n G2, Z24nf
G2, Z24i G2, Z24n G2, Z27n
G2, Z27

B500 Mounting Bracket
Part #: 2DW52AA



H Z Displays supported:
Z27x G2, Z31x, Z32, Z38c,
Z43





HP Z2 MINI VESA SLEEVE

WITH SECURITY FEATURE BRACKET AND VESA SECURITY SLEEVE³²



HP Z2 MINI RACK MOUNT KIT³²

7 Minis per Tray (5U)
8 Trays per 42U Rack
56 Units per 42U Rack

Cost effective, 1:1 virtualization



+ HP ZCentral
Remote Boost²⁶ =



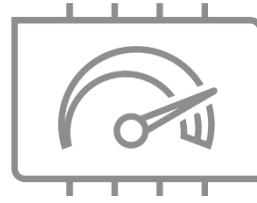
HP Z2
SFF G5

The world's most powerful
small form factor², reimagined



Z2 SFF G5

WHAT'S NEW?



Space-defying performance

- Intel® 125W 10-core Core™ and Xeon® W series processors
- NVIDIA® Quadro® 2000 and 3000-class graphics
- Intel® Wi-Fi 6
- World's highest wattage power supply in a small form factor desktop workstation³³
- Whisper quiet under heavy work loads
- Faster data transfer with Thunderbolt™ 3



Ability to customize

- More power in a **19% smaller** form factor than previous gen
- Sleek design
- Flexible I/O for today and tomorrow
- Centralized management with HP ZCentral Remote Boost software²⁵

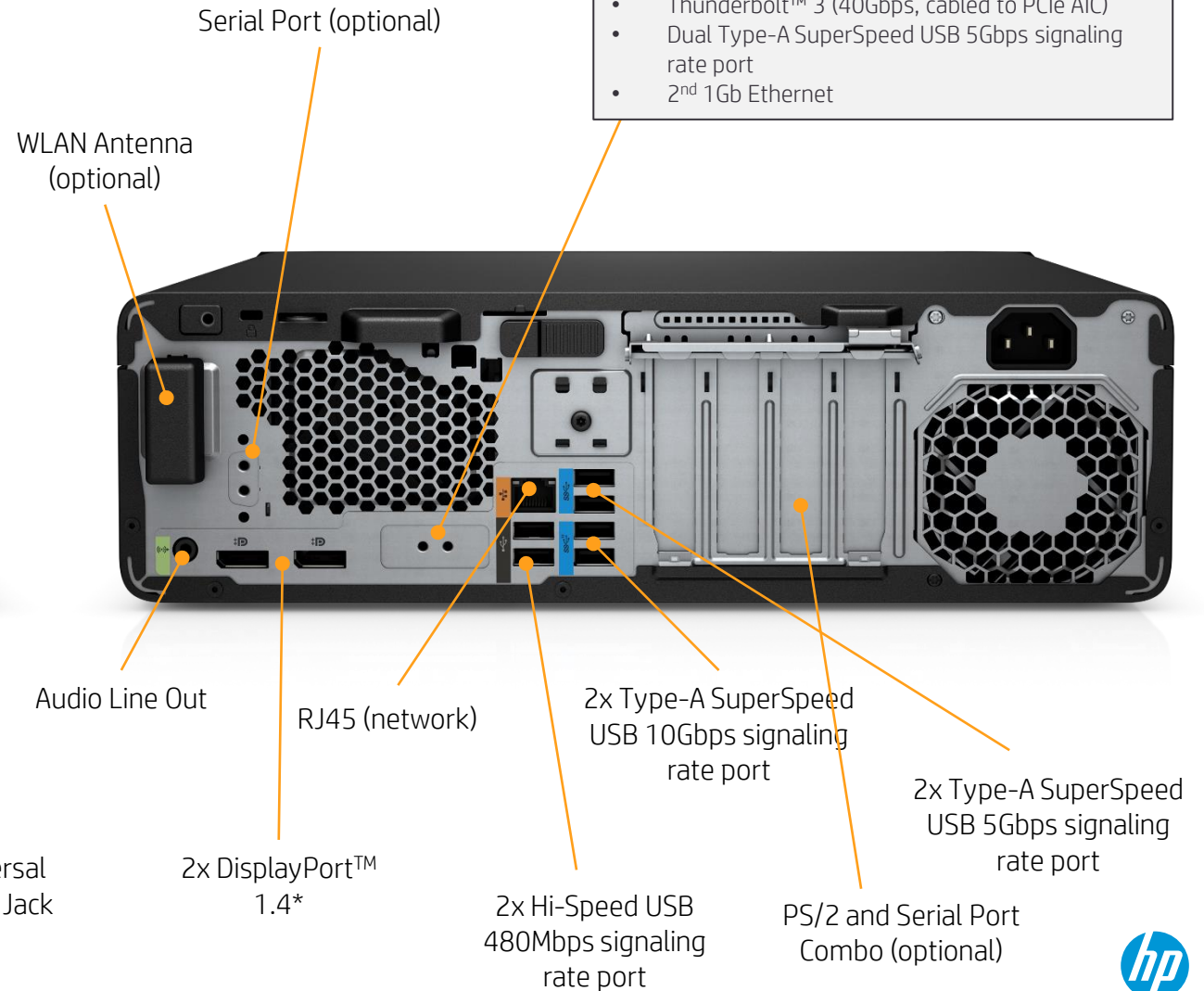
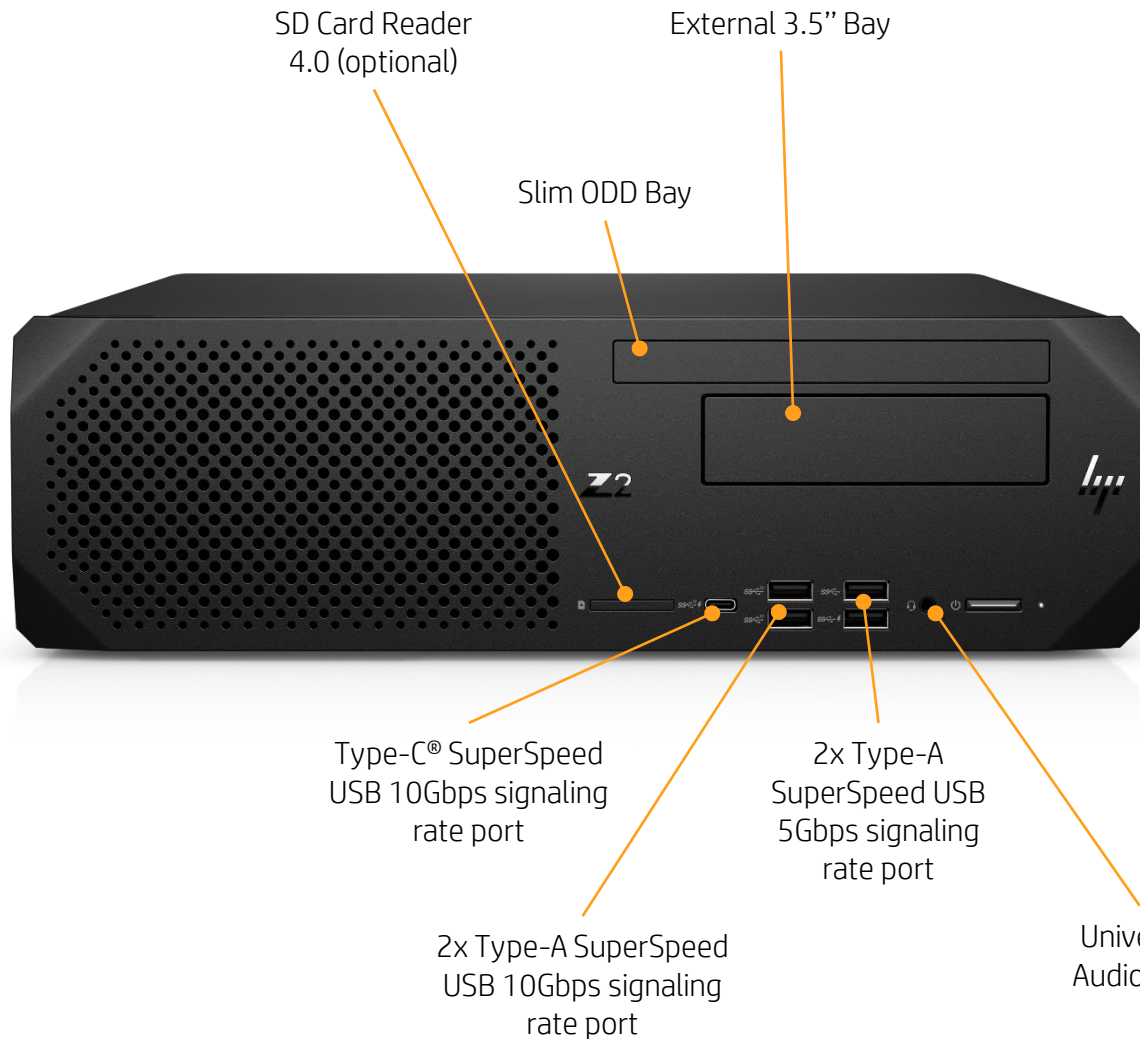


We test it so you can trust it 24/7

- Easy front access dust filter
- Deploy in mission critical environments
- Assured compatibility with ISV certifications
- Access to high performance visualization processing
- Enhanced security features
- Planned to have EPEAT® Gold certification²⁸
- **More sustainability** features
- MIL-STD tested

HP Z2 SFF G5

PORTS HIGHLIGHTS



Flex Option Slot, choice of the following cards:

- VGA
- HDMI 2.0b
- DP 1.4
- Type-C® SuperSpeed USB 10Gbps signaling rate port (ALT DP, PD 15W)
- Thunderbolt™ 3 (40Gbps, cabled to PCIe AIC)
- Dual Type-A SuperSpeed USB 5Gbps signaling rate port
- 2nd 1Gb Ethernet

SMALL

381 x 100 x 338 mm NT

SUSTAINABLE

EPEAT® SILVER²⁸

YEAR OVER YEAR COMPARISON

19% SMALLER

308 x 100 x 338 mm NT

MORE SUSTAINABLE

EPEAT® GOLD (*goal*)²⁸

HP Z2 SFF G4



HP Z2 SFF G5



YEAR OVER YEAR DESIGN

HP Z2 SFF G4



HP Z2 SFF G5

HOW SMALL?

THIS
SMALL

19% Smaller



HP Z2
TOWER G5

The world's most expandable
entry workstation³



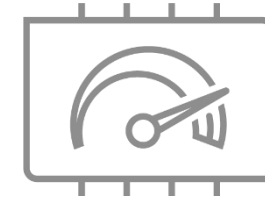
Z2 TOWER G5

WHAT'S NEW?



Built to expand,
Power to grow

- Maximum configurability: **15% smaller** without losing configurability gen over gen
- Sleek design
- Whisper quiet acoustics
- Flexible I/O for today and tomorrow
- Centralized management with HP ZCentral Remote Boost software²⁵



Benchmark for entry
workstation power

- Intel® 125W 10-core Core™ and Xeon® W series processors
- NVIDIA® Quadro® RTX 6000 graphics
- 700W power supply
- Intel® Wi-Fi 6



We test it so you
can trust it 24/7

- Deploy in mission critical environments
- Assured compatibility with ISV certifications
- Access to high performance visualization processing
- Enhanced security features
- Planned to have EPEAT® Gold certification²⁸
- More sustainability features
- MIL-STD tested



YEAR OVER YEAR COMPARISON

SMALL

435 x 169 x 356 mm NT

SUSTAINABLE

EPEAT® SILVER²⁸

15% SMALLER

385 x 169 x 356 mm NT

MORE SUSTAINABLE

EPEAT® GOLD (*goal*)²⁸

HP Z2 Tower G4



HP Z2 Tower G5



YEAR OVER YEAR DESIGN



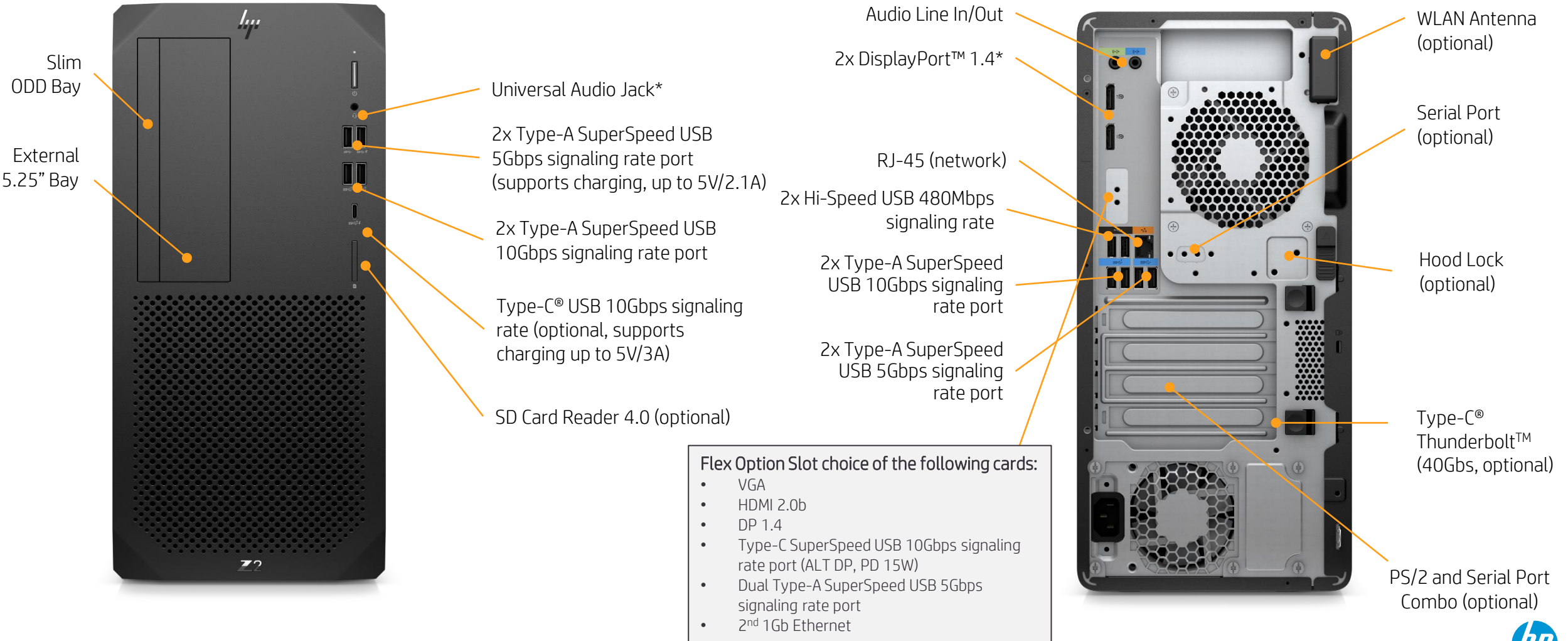
HP Z2 Tower G4

HP Z2 Tower G5

HOW SMALL?
THIS
SMALL
15% Smaller

HP Z2 TOWER G5

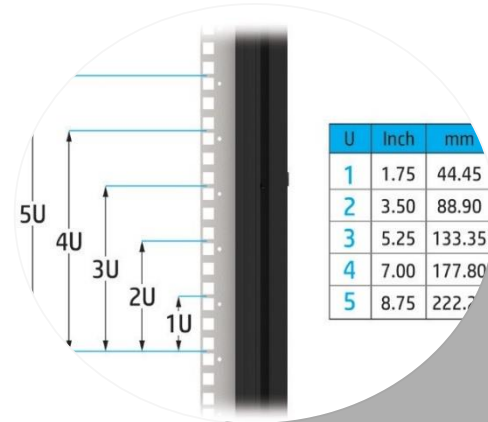
PORTS HIGHLIGHTS





Computing at the edge

RACKING WORKSTATIONS



Cost effective,
1:1 virtualization



GEN over GEN Comparisons



Z2 MINI G5 GEN-TO-GEN DEFINITION & COMPARISON

	HP Z2 Mini G4	HP Z2 Mini G5
Processor/Chipset	9 th Gen Intel® Core™ Processors up to i9 (Coffee Lake-R)/C246, vPro standard ³⁴ optional 95W	10 th Gen Intel® Core™ (65W, 125W ^{*35}) & Xeon® W series Processors (65W, 80W) up to i9 & W-1290P (Cometlake-S)/W480, vPro standard ³⁴
Power Adapter	135W/200W/230W	180W/280W
Memory	Up to 64 GB DDR4 2666 MT/s ECC / nECC SODIMM	Up to 64 GB DDR4 3200 MT/s ECC / nECC SODIMM (transfer rates up to 2933MT/s)
Graphics	<ul style="list-style-type: none"> Integrated: Intel® HD Graphics (UHD 610, 630, P630) AMD Radeon Pro WX 3200 (4GB) NVIDIA Quadro P1000 (4GB) NVIDIA Quadro P600 (4GB) 	<ul style="list-style-type: none"> Integrated: Intel® UHD Graphics (630, P630) AMD® Radeon™ Pro WX 3200 MXM³⁹ (4GB) NVIDIA® Quadro® P620 MXM³⁹ (4GB) <i>(available in Q4, 2020)</i> NVIDIA® Quadro® T1000 MXM³⁹ (4GB) NVIDIA® Quadro® T2000 MXM³⁹ (4GB) NVIDIA® Quadro® RTX 3000 MXM³⁹ (6GB) <i>(available in Q1, 2021)</i>
Security	TPM 2.0, Sure Start Gen4 ³⁶ , HP Sure Run ³⁷ , HP Sure Recover ³⁸ , HP Sure Click ¹² , HP Manageability Integration Kit ¹⁰	TPM 2.0, Sure Start Gen7 ¹⁸ , HP Sure Run Gen4 ¹¹ , HP Sure Recover with Embedded Reimaging Gen4 ¹⁷ , HP Sure Click ¹² , HP Manageability Integration Kit Gen4 ¹⁰ , HP Sure Sense ¹³
Connectivity/Ports	Side – (1) USB-C™ 3.1 Gen 1, (2) USB 3.1 Gen 1, (1) Combo Audio Jack Rear – (2) USB 3.1 Gen 1, (2) DP, (1) Choice of Serial, DP/HDMI/VGA/LAN or USB-C™ or Thunderbolt, (1) RJ45 Jack	Side – (1) Type-C® SuperSpeed USB 10Gbps; (2) Type-A SuperSpeed USB 10Gbps signaling rate port (1 charging port), (1) Combo Audio Jack Rear – (2) Type-A SuperSpeed USB 10Gbps signaling rate port; (2) DP™ 1.4 ^{**} ; (1) 3 rd DP™ 1.4 (optional); Upper Optional Choice of (1) Serial or (1) Dual Type-A SuperSpeed 5Gbp Port; and Lower Optional Choice of DP1.4/HDMI/VGA/2.5GbE LAN/1GbE LAN, dual Type-A SuperSpeed USB 5Gbps signaling rate port, or Type-C® SuperSpeed USB 10Gbps signaling rate port (Alt DP, PD 15W), Thunderbolt™ 3 (40Gbps); (1) RJ45 Jack
Networking		Intel® Wi-Fi 6 & HP Connect
EPEAT®	Silver	Gold (target)
Others	N/A	MIL-STD-810G



Z2 SFF G5 GEN-TO-GEN DEFINITION & COMPARISON

	HP Z2 SFF G4	HP Z2 SFF G5
Processor/Chipset	9 th Gen Intel® Core™ Processors up to i9 (Coffee Lake-R)/C246, vPro standard ³⁴ optional 95W	10 th Gen Intel® Core™ (65W, 125W ³⁵) & Xeon® W series Processors (65W, 80W) up to i9 & W-1290P (Cometlake-S)/W480, vPro standard ³⁴
PSU	250W/310W/400W	260W/450W
Memory	Up to 128 GB DDR4 2666 MT/s ECC / nECC UDIMM	Up to 128 GB DDR4 3200 MT/s ECC / nECC UDIMM (transfer rates up to 2933MT/s)
Graphics	<ul style="list-style-type: none"> Integrated: Intel® HD Graphics (UHD 610, 630, P630) AMD Radeon Pro WX 3100 (4GB) AMD Radeon Pro WX 3200 (4GB) NVIDIA Quadro P400 (2GB) NVIDIA Quadro P620 (2GB) NVIDIA Quadro P1000 (4GB) 	<ul style="list-style-type: none"> Integrated: Intel® UHD Graphics (630, P630) AMD® Radeon™ Pro WX 3200 (4GB) NVIDIA® Quadro® P400 (2GB) NVIDIA® Quadro® P620 (4GB) NVIDIA® Quadro® P1000 (4GB) NVIDIA® Quadro® T2000 MXM³⁹ (4GB) NVIDIA® Quadro® RTX 3000 MXM³⁹ (4GB) (available in Q1, 2021)
Security	TPM 2.0, Sure Start Gen4 ³⁶ , HP Sure Run ³⁷ , HP Sure Recover ³⁸ , HP Sure Click ¹² , HP Manageability Integration Kit ¹⁰	TPM 2.0, Sure Start Gen7 ¹⁸ , HP Sure Run Gen4 ¹¹ , HP Sure Recover with Embedded Reimaging Gen4 ¹⁷ , HP Sure Click ¹² , HP Manageability Integration Kit Gen4 ¹⁰ , HP Sure Sense ¹³
Connectivity/Ports	Front – (1) USB-C™ 3.1 Gen 2, (2) USB 3.0 (1 charging), (1) Combo Audio Jack Rear – (4) USB 3.0, (2) USB 2.0, (2) DP 1.2, (2) Audio: Line In, Line Out (w/re-tasking), (1) Choice of Serial, DP/HDMI/VGA or USB-C™ or Thunderbolt, (1) Serial - Selectable via MB, PS/2 optional via PCI	Front – (1) Type-C® SuperSpeed USB 10Gbps (optional); (2) Type-A SuperSpeed USB 10Gbps signaling rate port; (2) Type-A SuperSpeed USB 5Gbps (1 supports fast charge) signaling rate port, (1) Combo Audio Jack Rear – (2) Type-A SuperSpeed USB 10Gbps signaling rate port; (2) Type-A SuperSpeed USB 5Gbps; (2) USB 2.0, (2) DP 1.4*, (1) Combo Audio Jack; Optional (1) Serial, (1) Choice of DP 1.4/HDMI/VGA, dual Type-A SuperSpeed USB 5Gbps signaling rate port, Type-C® SuperSpeed USB 10Gbps signaling rate port (Alt DP, PD 15W), Thunderbolt™ 3 (40Gbps)
Drive Bays	(1) 3.5" external, (1) 3.5", (1) 2.5", (1) 9.5mm ODD	(1) 3.5" external, (1) 3.5", (1) 2.5", (1) 9.5mm ODD
Expansion Slots	(1) PCIe x16, (1) PCIe x16 wired x4 (Optane), (2) PCIe x1, (1) M.2 2230 for optional WLAN/Bluetooth®, (2) M.2 2280 for optional SSD drive	(1) PCIe 3 x16 (x16 connector), (1) PCIe 3 x4 (x16 connector), (2) PCIe 3 x1 (x1 connector), (1) M.2 2230 for optional WLAN/Bluetooth® (improved antenna performance), (2) M.2 2280 for optional SSD drive
EPEAT®	Silver	Gold (target)
Others	N/A	MIL-STD-810G



Z2 TOWER G5 GEN-TO-GEN DEFINITION & COMPARISON

HP Z2 Tower G4

HP Z2 Tower G5

Processor/Chipset	9 th Gen Intel® Core™ Processors up to i9 (Coffee Lake-R)/C246, vPro standard ³⁴ optional 95W	10 th Gen Intel® Core™ (65W, 125W³⁵) & Xeon® W series Processors (65W, 80W) up to i9 & W-1290P (Cometlake-S)/W480, vPro standard ³⁴
PSU	250W/500W/650W	350W/500W/700W
Memory	Up to 128 GB DDR4 2666 MT/s ECC / nECC UDIMM	Up to 128 GB DDR4 3200 MT/s ECC / nECC UDIMM (transfer rates up to 2933MT/s)
Graphics	<ul style="list-style-type: none"> Integrated: Intel® UHD Graphics (UHD 610, 630, P630) AMD Radeon Pro WX 3100 (4GB) AMD Radeon Pro WX 3200 (4GB) AMD Radeon Pro WX 5500 (8GB) AMD Radeon Pro WX 5700 (8GB) AMD Radeon Pro WX 7100 (8GB) NVIDIA Quadro P400 (2GB) NVIDIA Quadro P620 (2GB) NVIDIA Quadro P1000 (4GB) NVIDIA Quadro P2200 (5GB) NVIDIA Quadro RTX 4000 (8GB) NVIDIA Quadro RTX 5000 (16GB) NVIDIA Quadro RTX 6000 (24GB) 	<ul style="list-style-type: none"> Integrated: Intel® UHD Graphics (630, P630) AMD® Radeon™ Pro WX 3200 (4GB) AMD® Radeon™ Pro WX 5500 (8GB) <i>(available in Nov, 2020)</i> AMD® Radeon™ Pro WX 5700 (8GB) <i>(available in Nov, 2020)</i> NVIDIA® Quadro® P400 (2GB) NVIDIA® Quadro® P620 (2GB) NVIDIA® Quadro® P1000 (4GB) NVIDIA® Quadro® P2200 (5GB) NVIDIA® Quadro® RTX 4000 (8GB) NVIDIA® Quadro® RTX 5000 (16GB) NVIDIA® Quadro® RTX 6000 (24GB)
Security	TPM 2.0, Sure Start Gen4 ³⁶ , HP Sure Run ³⁷ , HP Sure Recover ³⁸ , HP Sure Click ¹² , HP Manageability Integration Kit ¹⁰	TPM 2.0, Sure Start Gen6¹⁸ , HP Sure Run Gen4¹¹ , HP Sure Recover with Embedded Reimaging Gen4¹⁷ , HP Sure Click ¹² , HP Manageability Integration Kit Gen4¹⁰ , HP Sure Sense ¹³
Connectivity/Ports	Front – (1) USB-C™ 3.1 Gen 2, (2) USB 3.0 (1 charging port), (1) Combo Audio Jack Rear – (4) USB 3.0, (2) USB 2.0, (2) DP 1.2, (2) Audio: Line In, Line Out (w/re-tasking), (1) Choice of Serial, DP/HDMI/VGA or USB-C™ or Thunderbolt, (1) Serial – Selectable via MB, PS/2 optional via PCI	Front – (1) Type-C™ SuperSpeed USB 10Gbps (optional); (2) Type-A SuperSpeed USB 10Gbps ; (2) Type-A SuperSpeed USB 5Gbps (1 supports fast charge), (1) Combo Audio Jack Rear – (2) Type-A SuperSpeed USB 10Gbps signaling rate port ; (2) Type-A SuperSpeed USB 5Gbps signaling rate port ; (2) USB 2.0, (2) DP 1.4* , (2) Audio: Line In, Line Out; Optional (1) Serial, (1) Choice of: DP/HDMI/VGA, dual Type-A SuperSpeed USB 5Gbps signaling rate port , Type-C™ SuperSpeed USB 10Gbps signaling rate port (Alt DP, PD 15W), Thunderbolt™ 3 (40Gbps)
Drive Bays	(2) 5.25" HH external, (2) 3.5"	(1) 5.25" HH external, (2) 3.5", (1) 2.5", (1) 9.5mm ODD
Expansion Slots	(1) PCIe x16, (1) PCIe x16 wired x4 (Optane), (2) PCIe x1, (1) M.2 2230 for optional WLAN/Bluetooth®, (2) M.2 2280 for optional SSD drive	(1) PCIe 3 x16 (x16 connector), (1) PCIe 3 x4 (x16 connector), (2) PCIe 3 x1 (x4 connector), (1) M.2 2230 for optional WLAN/Bluetooth® (improved antenna performance) , (2) M.2 2280 for optional SSD drive
EPEAT®	Silver	Gold (target)
Others	N/A	MIL-STD-810G

